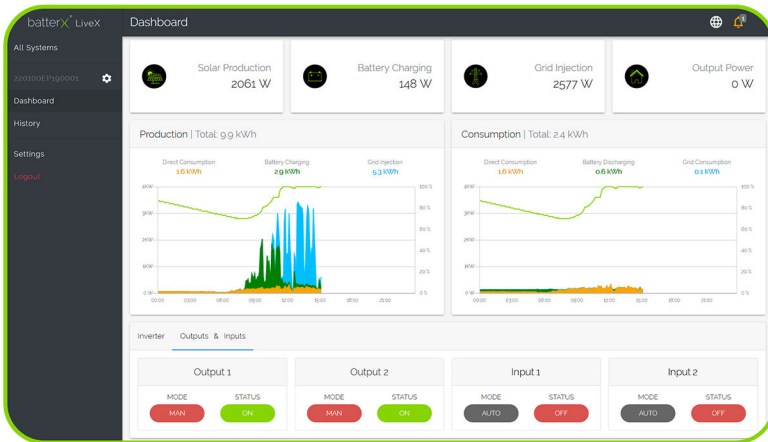


liveX Business

developed by batterX[®]

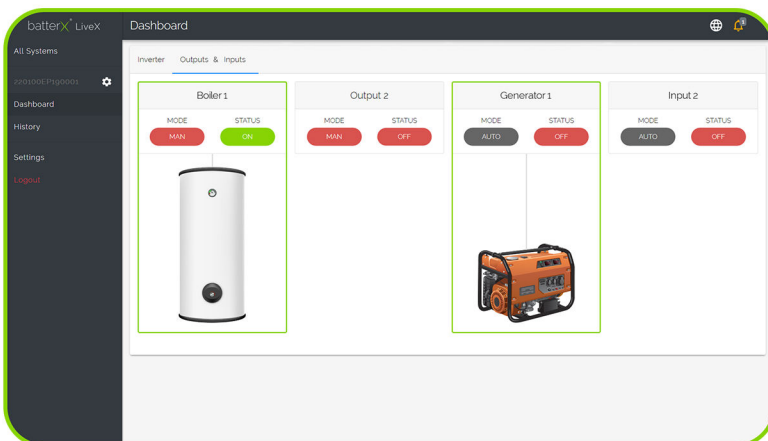
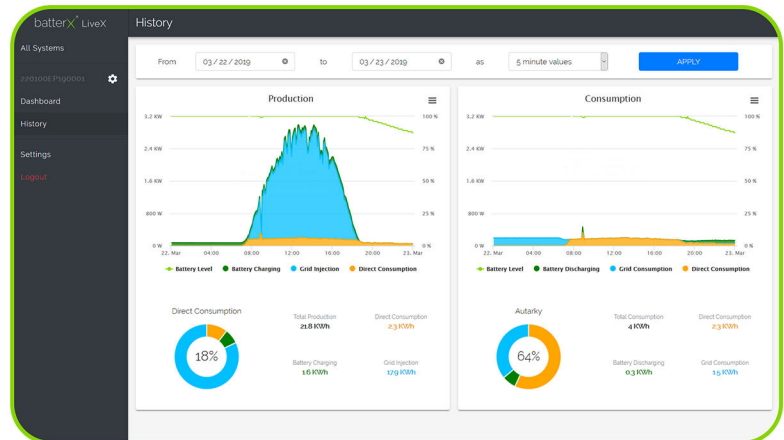
MONITORING- AND CONTROLLING TOOL

liveX is compatible with all web browsers, computers and mobile devices.



Live-dashboard with energy flow diagram and indication of all parameters: PV, battery, grid, consumption.

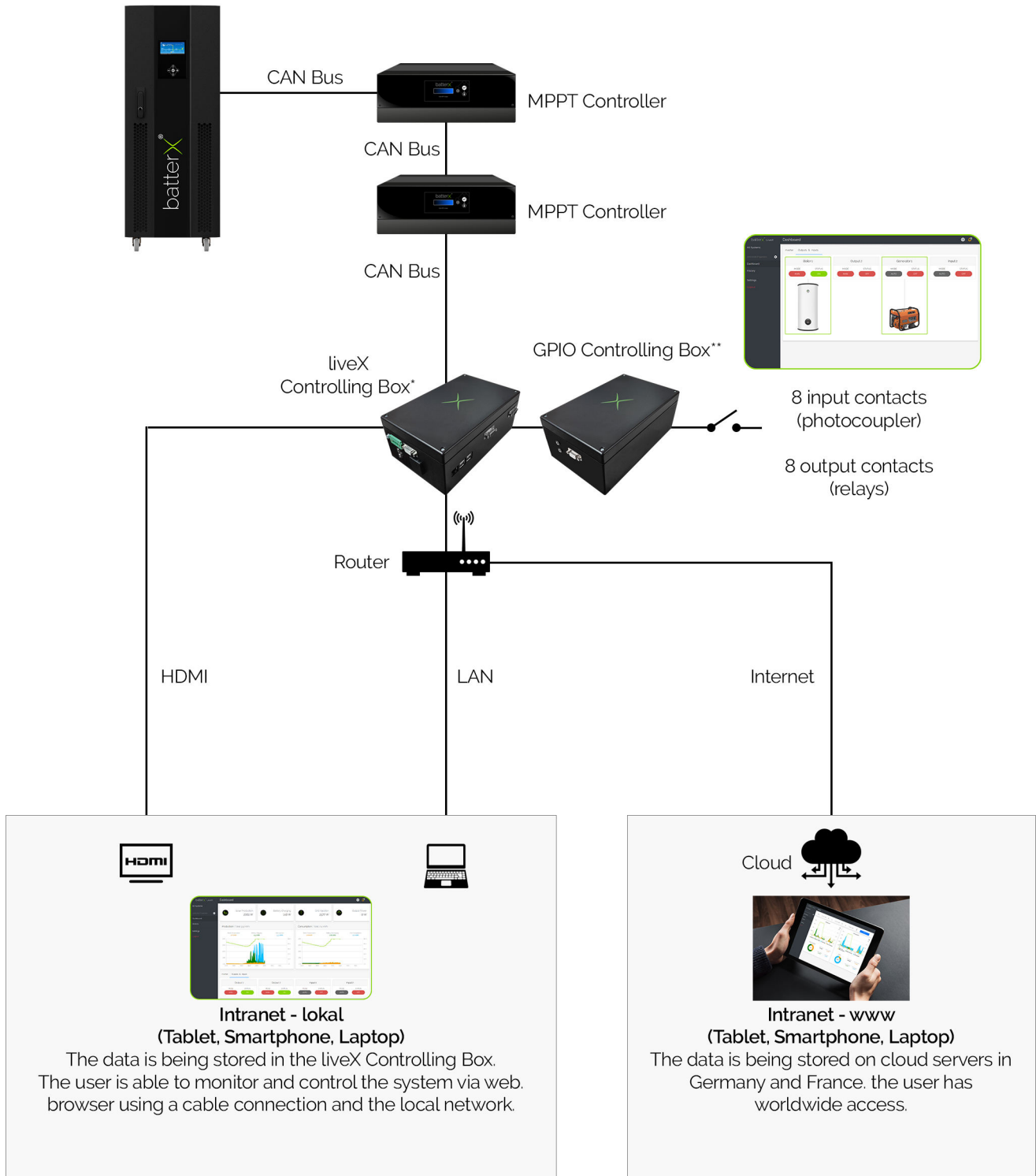
Current and former daily, weekly and monthly reports for production and consumption analysis



Activating programmable relay contacts the energy management tool becomes smart. Hereby it's possible to communicate with several energy sources like a diesel genset and loads which can be switched on or off depending on the customer requirement.

liveX Business

Communication between Energy Flow Manager (EFM) & liveX



*liveX Business (reference "LXB"): Energy Flow Management + cloud-based monitoring & controlling. Also available for local networks.

Hardware: liveX Business Controlling Box (240 x 140 x 95 mm), cables

Software: Desktop and mobile browser version of the monitoring, Android widget.

**GPIO Controlling Box (reference GPIOB): 16 programmable contacts (GPIO) for controlling external devices, such as load or generators.

8 input and 8 output contacts are available to be programmed in the LiveX monitoring.